

p-Nucleophosmin (T199) Antibody

Cat No.: SJ-AB3032

Applications

Reactive Species

Human

Positive Samples

Refer to Validation Data.

Validated Applications

WB, IHC, ICC/IF, IHF, FC

Recommended Dilution

WB 1:1000-1:2000

IHC 1:100-1:200

ICC/IF 1:50-1:200

IHF 1:50-1:200

FC 1:20-1:100

Product Information

Antibody Type

Recombinant Rabbit mAb

Immunogen

A synthesized peptide derived from human Nucleophosmin around the phosphorylation site of T199.

Modification

Phosphorylated

Isotype

Rabbit IgG

Clone No.

N/A

Purification Method

Affinity purification

Form

Liquid

Storage Buffer

Rabbit IgG in 10mM phosphate buffered saline, pH 7.4, 150mM sodium chloride, 0.05% BSA, 0.02% sodium azide and 50% glycerol.

Storage Conditions

Store at +4°C for short term. Store at -20°C for long term. Avoid freeze/thaw cycle.

Host

Rabbit

Clonality

Monoclonal

Conjugation

Unconjugated

Concentration

N/A

Background Information

Function

Involved in diverse cellular processes such as ribosome biogenesis, centrosome duplication, protein chaperoning, histone assembly, cell proliferation, and regulation of tumor suppressors p53/TP53 and ARF. Binds ribosome presumably to drive ribosome nuclear export.

UniProt ID

P06748

Organism

Human

Recommended Name

N/A

Short Name

N/A

Alternative Names

NO38; NPM; NPM1; Nucleolar phosphoprotein B23; Nucleophosmin; nucleophosmin nucleoplasmin family member 1; Numatrin;

Gene ID

N/A

Gene Name

N/A

Calculated MW

33 kDa

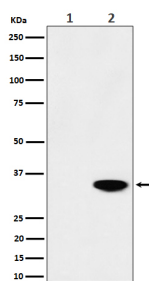
Observed MW

33 kDa

Subcellular Location

N/A

Validation Data



Western blot analysis of Phospho-Nucleophosmin (T199) expression in (1) HeLa cell lysate; (2) HeLa cell treated with CA lysate.

NOTICE: For research use only. Not for therapeutic or diagnostic purposes.

Contact

For technical support and original validation data for this product please contact:

T: 400-018-6916

E: support@sanjingbio.com

W: www.sanjingbio.com